



Est. UK1958
Bearmach
LAND ROVER PARTS

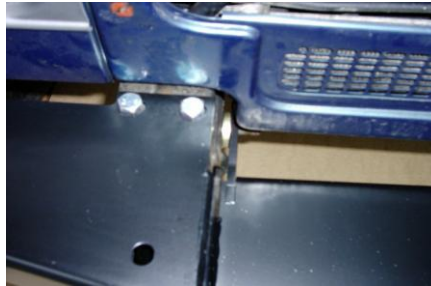
**BA 3093B
WINCH MOUNT BUMPER
FITTING INSTRUCTIONS**

KIT SUPPLIED

2 x SPACERS
2 x M10 COUNTERSINK BOLTS
2 x M10 NUTS
2 x M10 WASHERS

TO FIT NEW BUMPER REMOVE TOWING EYES AND BUMPER,
RETAIN FIXINGS TO FIT NEW WINCH MOUNT BUMPER OR
REPLACE WITH NEW FIXINGS (not supplied)

OFFER BUMPER UP TO CHASSIS DROP 4 BUMPER MOUNTING
BOLTS THROUGH TOP OF BUMPER AND CHASSIS,



FIT TOWING EYE BOLT WITH SPACER SUPPLIED PLACED
BETWEEN CHASSIS AND REAR FACING BUMPER BRACE.(fig 1)

IF FITTING WITH OUR SUMP GUARD BA 083C FIT SUMP GUARD
BRACKETS TO BUMPER BRACE AT THIS STAGE BEFORE
REPLACING TOWING EYE NUT.

**IMPORTANT NOTE :- FIT FAIRLEAD BEFORE WINCH
USING THE TWO COUNTERSINK BOLTS PROVIDED.**

AFTER SECURING WINCH NOW LIFT BUMPER TO DESIRED
POSITION AND TIGHTEN ALL FIXINGS.