

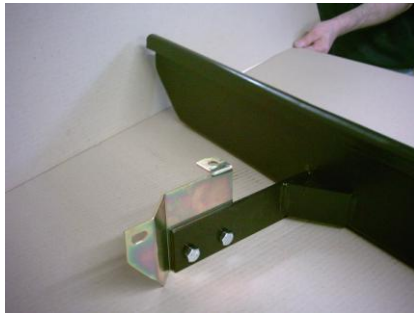


Est. UK 1958
Bearthmach
LAND ROVER PARTS

BA 2091/G/T/TG Discovery Rock Guards Fitting Instructions.

Kit List.

- 2 x Pairs of Brackets
- 1 x Pair of Rock guards
- 12 x M10 x 30 Bolts
- 12 x Nyloc Nuts.
- 24 x Washers.



Front



Rear

1. Remove the existing plastic sills from the vehicle by undoing the bolts at either end and pushing through the centres of the clips on the sill to release.
2. Remove the nut from the outrigger and attach the brackets onto the outriggers of the vehicle. The brackets should initially be put on the vehicle with out the rock sliders. However the layout of the brackets should be as in the photograph.
3. Now bolt the Rock sliders to the brackets using only one bolt in each bracket for the time being.
4. Offer up the Rock Slider up to the vehicle. It may be necessary to cut a notch in the rubber around the door pillars in order for the unit to fit properly.



5. Bolt the Rock Sliders to the brackets and tighten. Although the brackets should still be left fairly loose on the vehicle at this stage.
6. Now jack up the Rock slider and position so that the rubber on the slider, is crushed along the length of the body and forms a water tight seal. When happy with the position, drill the outriggers and secure with the bolts provided through the slotted holes in the brackets.
7. Secure and tighten all bolts before removing the jack.

Rear



Front

