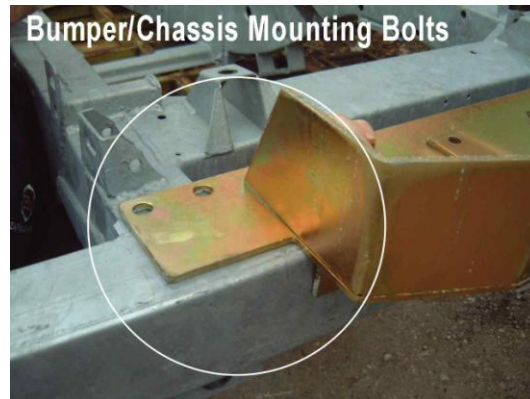




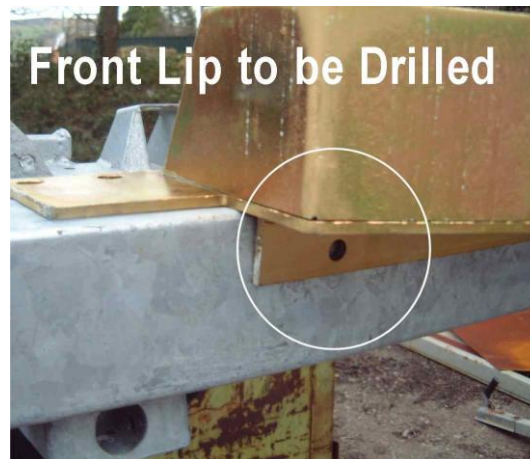
Est. UK1958
Bearthmach
LAND ROVER PARTS

BA 2028 Def/S3 Winch Mount. Fitting Instructions

- 1 Place the winch mount on the bumper and fit using the bumper – chassis mounting bolts.



- 2 The lip, with 2 bolt holes, on the winch mount should now be in front of the bumper. Drill the bumper and bolt.



- 3 There are another 2 holes that need to be drilled. These are on top of the bumper where the winch is to be positioned. It may be necessary to enlarge the other bolt holes depending on the winch application.

