

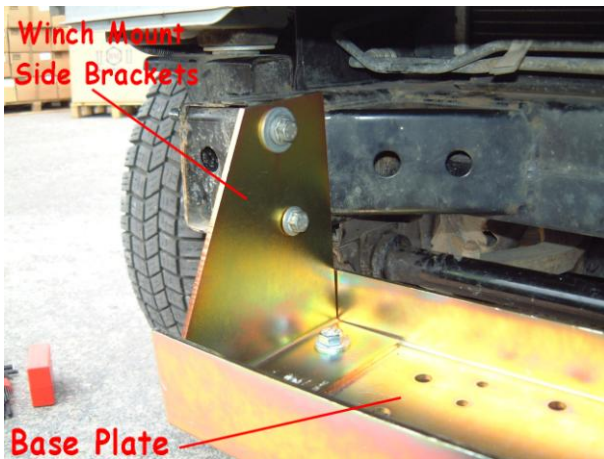


Est. UK 1958  
**Bearmach**  
LAND ROVER PARTS

## BA 176 Discovery 2 Winch Mount Fitting Instructions

1 To fit the Winch Mount, the front bumper should be removed. Some of the vehicle under-trays may need to be removed to gain access to the bolts.

2 Now, fit the Winch Mount assembly to the vehicle and put the winch in place.



Photograph shows vehicle without winch in place and with bumper removed.

3 Remove the wire mesh grill from the spoiler to allow access to the winch. It may also be necessary to cut the bumper/spoiler so offer up the bumper to the vehicle and cut until the winch/winch mount is clear and the bumper fits satisfactory.

4 Now remove the bumper, winch/winch mount assembly and take off the Winch Mount Side Brackets.

5 Replace the bumper with the Winch Mount Side Brackets in position.

6 Make sure your winch is securely attached to the base plate of the Winch Mount, and lift to attach to the Winch Mount Side Brackets with the nuts and bolts provided. Some help may be necessary at this point.

7 Finally tighten all nuts and bolts and check the bumper and winch mount is secure before driving.

