



Est. UK 1958
Bearmach
LAND ROVER PARTS

DEFENDER 90 SIDE STEP INSTRUCTIONS BA 030 / BA 030A / BA 133

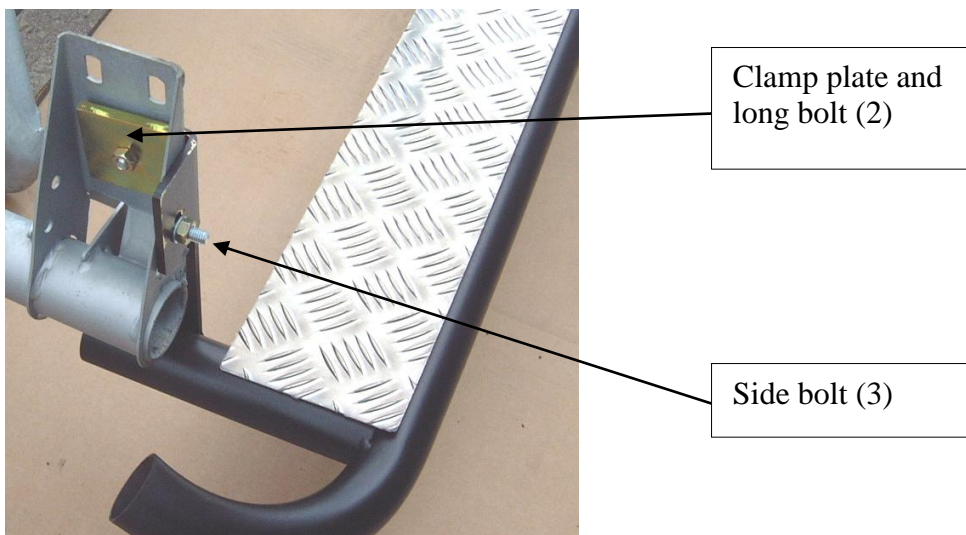
(Photographs show BA 133)

Kit List

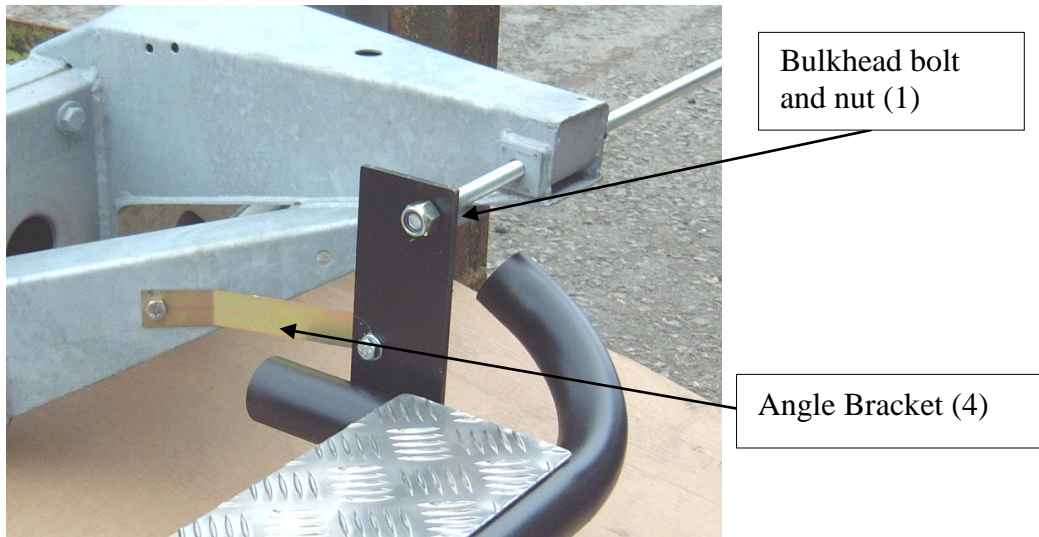
- 1 x Side Steps (pair)
- 2 x Angle Brackets
- 6 x Bolts M8x25
- 2 x Bolts M8x35
- 16 x Washers
- 2 x Clamp Plate
- 8 x M8 Nyloc Nuts

Instructions

1. All holes should already exist on chassis, no drilling required.
2. Remove nut from bulkhead retain bolt (1). Ensure the bolt has the threaded end toward the rear of the vehicle to ease fitment.
3. Offer the step up to the bolt. Ensure that the rear lines up with the rear outrigger.
4. Replace the bulkhead nut, but only by a few threads.
5. Using the clamp plate (2), and the longer bolts. Clamp the step through the large hole in the outrigger. Do not tighten at this time.
6. Add the side bolt (3), movement of the step may be necessary to locate the hole.
7. Bolt the angle bracket (4), then tighten all the bolts on the step



Rear Mounting showing outrigger



Front mounting – bulkhead is not on chassis shown.